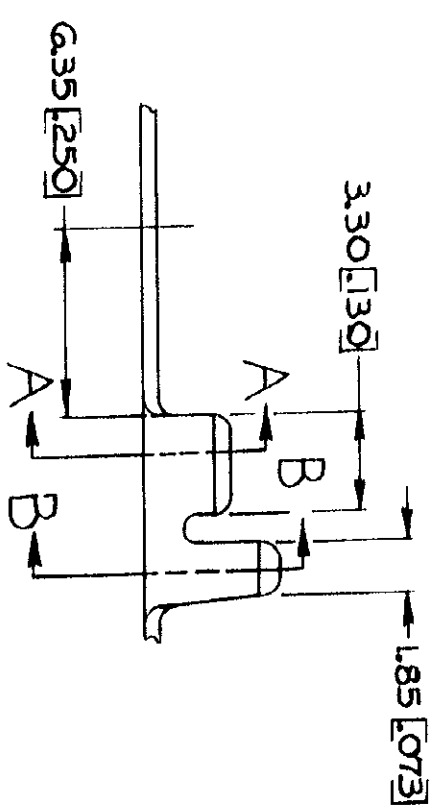
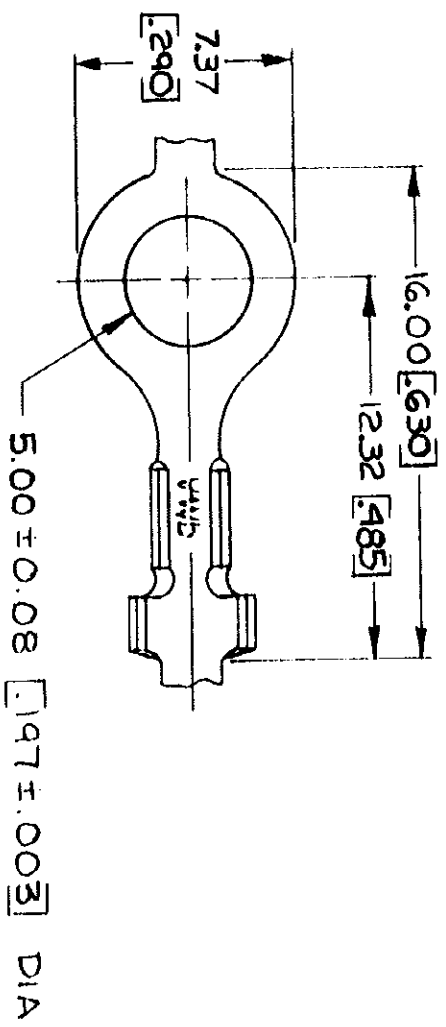
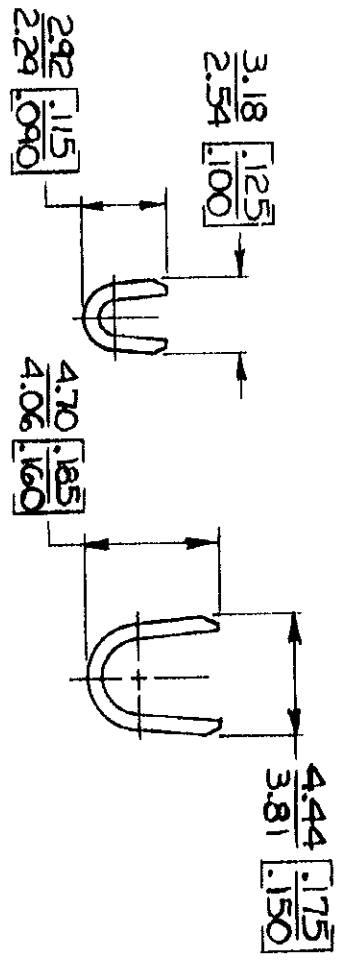


© COPYRIGHT 1964 BY AMP INCORPORATED, HARRISBURG, PA.
 ALL INTERNATIONAL RIGHTS RESERVED. AMP INCORPORATED PRODUCTS
 COVERED BY U. S. AND FOREIGN PATENTS AND/OR PATENTS PENDING.



1. CONTINUOUS STRIP ON REELS
2. DIMENSIONS IN BRACKETS ARE IN INCHES.



SECT A-A

SECT B-B

REVISIONS		DATE	APPROVED
P	F	4-3-94	[Signature]
		6/22/78	[Signature]

STUD SIZE	WIRE RANGE	INSULATION RANGE	FINISH	MATERIAL	PART NO
# 10	02-0.6 mm ² [24-20]	203-2.54 [080-100]	TIN	0.5 GRASS	41582
UNLESS OTHERWISE SPECIFIED DIMENSIONS ARE IN MILLIMETERS TOLERANCES ON: DECIMALS ±0.30(0.015) ANGLES ±1°					
CONTRACT NO			NAME		
DR [Signature]			AMP INCORPORATED Harrisburg, Pa.		
CHK [Signature]			RING		
APPD [Signature]			SIZE		
APPD [Signature]			CODE IDENT NO		
DESIGN APPD [Signature]			DRAWING NO		
OTHER APPD			SCALE		
FINISH			B		
SEE TABLE			00779		
			41582		
			SHEET		

METRIC

CUSTOMER DRAWING